

## Success Stories

# Project of a desktop application and integration for a pharmaceutical company

### About Pfizer

Pfizer is a global company that is dedicated to the creation of medicines and treatments for different diseases, in addition to constant research. They deliver scientific advances through their workforce to ensure the health, safety, and well-being of people.



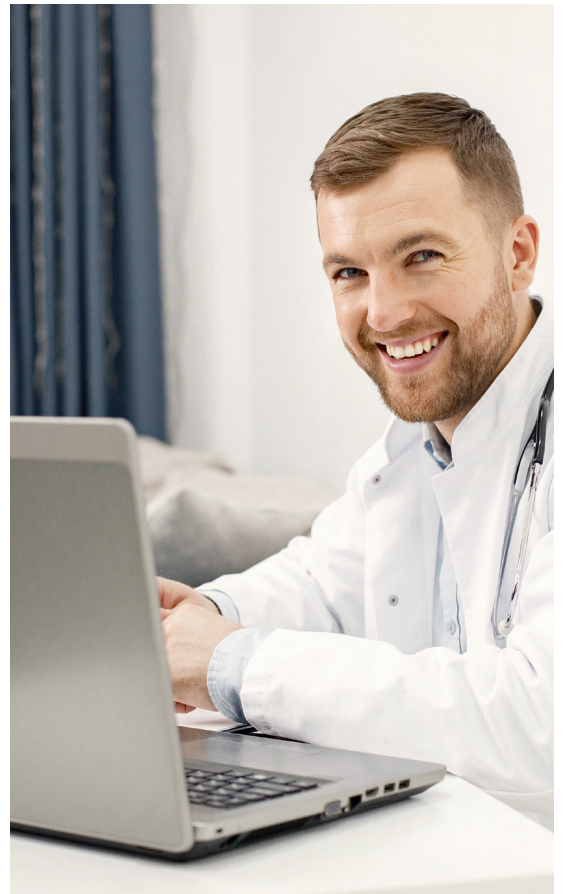
### Challenge

American multinational pharmaceutical and biotech corporation with more than 120 thousand employees worldwide needed to develop a desktop application to predict ATTR-CM disease based on statistics entered the system so that it can be read and used by the end user. The result is a % probability generated by the machine.

### Our solution

The Rootstack team was challenged to make this application that Pfizer needed to work on various operating systems such as Mac or Windows.

The objective of the integration was to be able to detect the disease. And part of the tasks was focused on the protection of patient information. The technologies used in this project were Node, Vue js and Webpack.



Work was also done on integrating Pfizer's ATTRCM prediction model into the prediction services of a Dutch multinational conglomerate with more than 80,000 employees worldwide to provide medical clients with rapid patient information.

To do this integration, our engineers learned how to use Amazon SageMaker in the deployment process. The model took several seconds to start, so more models needed to be created in advance to be ready to go.



### Support service

In addition to the application and the integrations, Rootstack as part of its services offered support and updates in the event of any error or problem that may arise during the execution and testing phase.

### Technologies

For this project, we worked with Node, Vue js, Webpack, Laravel, Python, Apache, PHP, AWS, Terraform, Linux, and Docker.